

How to a second computer
to use as an input in VMix

Many organizations will use programs like Mediashout, ProPresenter, Easy Worship, Powerpoint, or similar programs to allow the audience to view this media on the projector screens within the sanctuary. Your online viewers would like to view this too.

Download and install the Desktop Capture Program on the computer you want to view from Vmix. <http://www.vmixhd.com/download.aspx>

Both computers will need to be on the same network for this to work

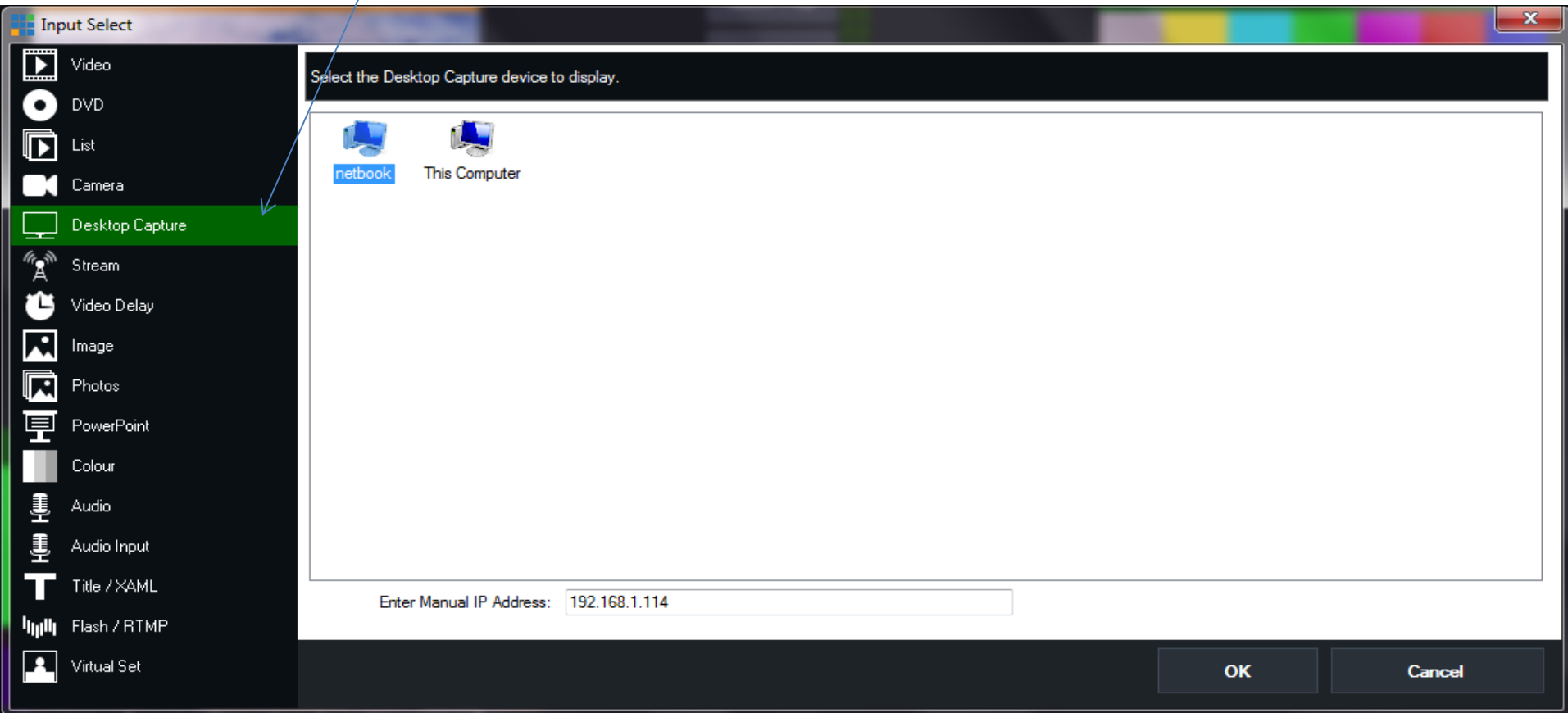
Add input (lower left)

The screenshot displays the vMix Basic software interface. At the top, the title bar reads "vMix Basic - 14.0.0.85". The main interface is divided into several sections:

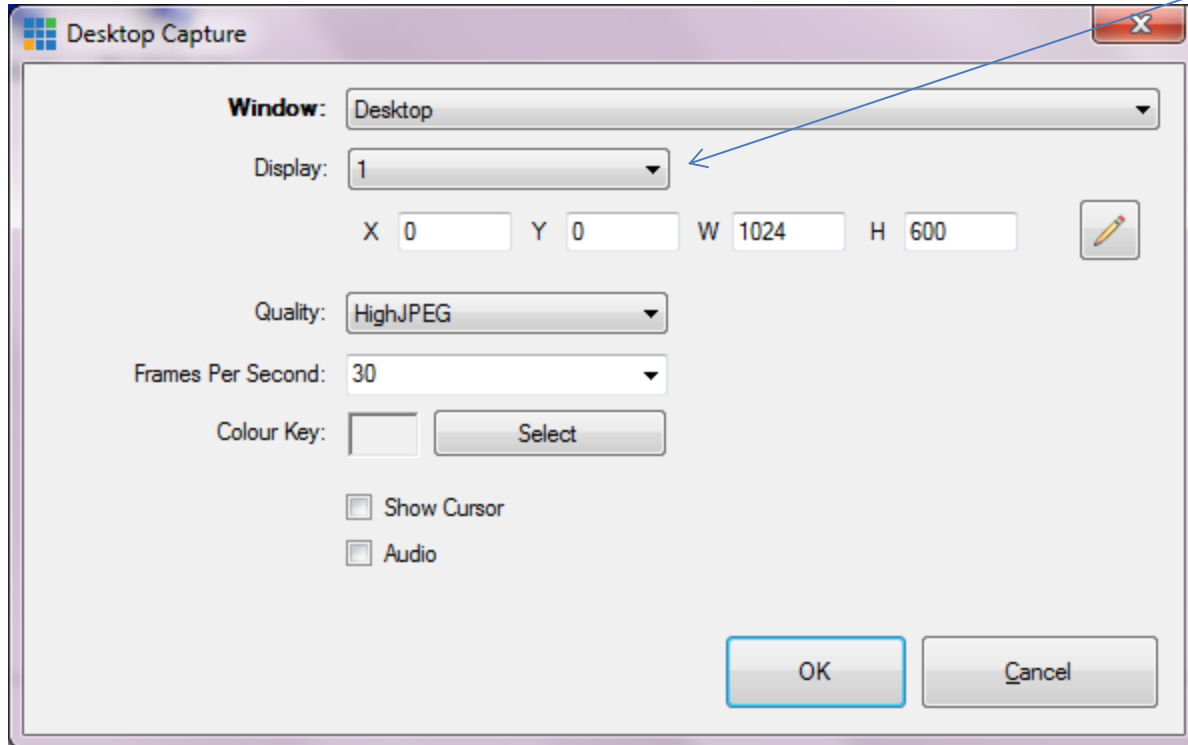
- Top Bar:** Contains buttons for "Open Preset", "Save Preset", "Last Preset", "Close Preset", "Fullscreen", "Pause Inputs", "Basic", "Settings", and a help icon.
- Left Panel:** Features a "Test Bars" input source with a color calibration chart.
- Center Panel:** A vertical stack of controls for the selected input, including "Quick Play", "Cut", "Fade", "VerticalSlide", "Fly", "Cube", and "FTB".
- Right Panel:** Shows a video input source named "Church" with a preview window displaying a church steeple against a sunset sky. Below the preview is a timeline with the time "00:00:15 / 00:00:15 / 00:00:00" and a "Restart" button.
- Bottom Bar:** Contains the "Add Input" button, which is highlighted with a blue arrow pointing from the text above. Other buttons include "Record", "External", "Stream", "MultiCorder", "PlayList", and "Overlay".

A tooltip at the bottom left of the "Add Input" button reads: "Update Available Add a new Input such as a Video, Camera or Image".

For Input Select Desktop Capture, and select the computer that you installed the software on, Press OK



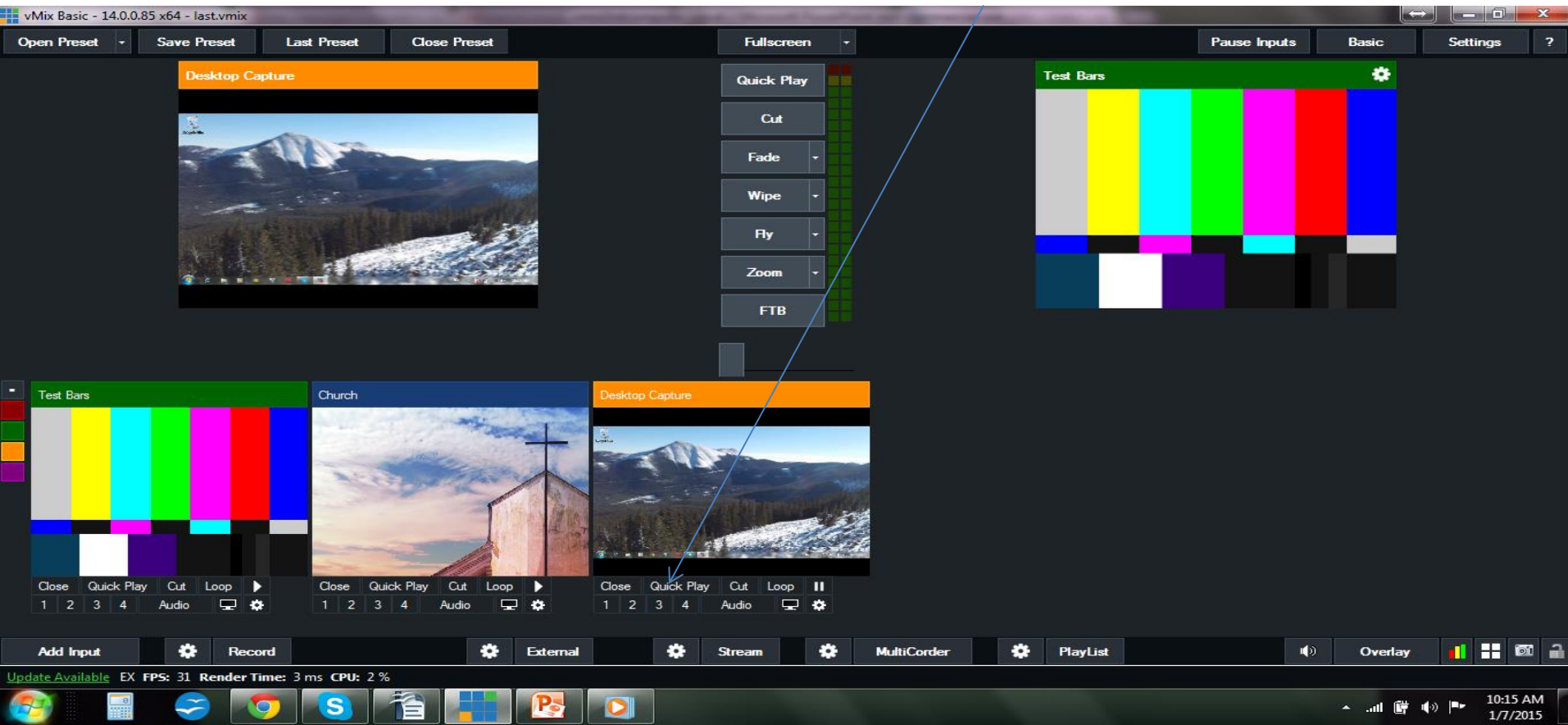
A new window will pop up and allow you to set your options. Please note that most setups you will want the display to be set to “2”. This is normally the projector view



Quality = High Jpeg

Frames Per Second = 30

The desktop from the second computer now shows an input. You can press quick play to go live.



If you have any other questions please let us know, we are happy to help.

1 (800) 807-1014

support@sermon.net

By submitting a ticket within your Sermon Studio
From Support > Submit a ticket

We do offer FREE remote assistance, if you could use some help let us know and we can set up a time.